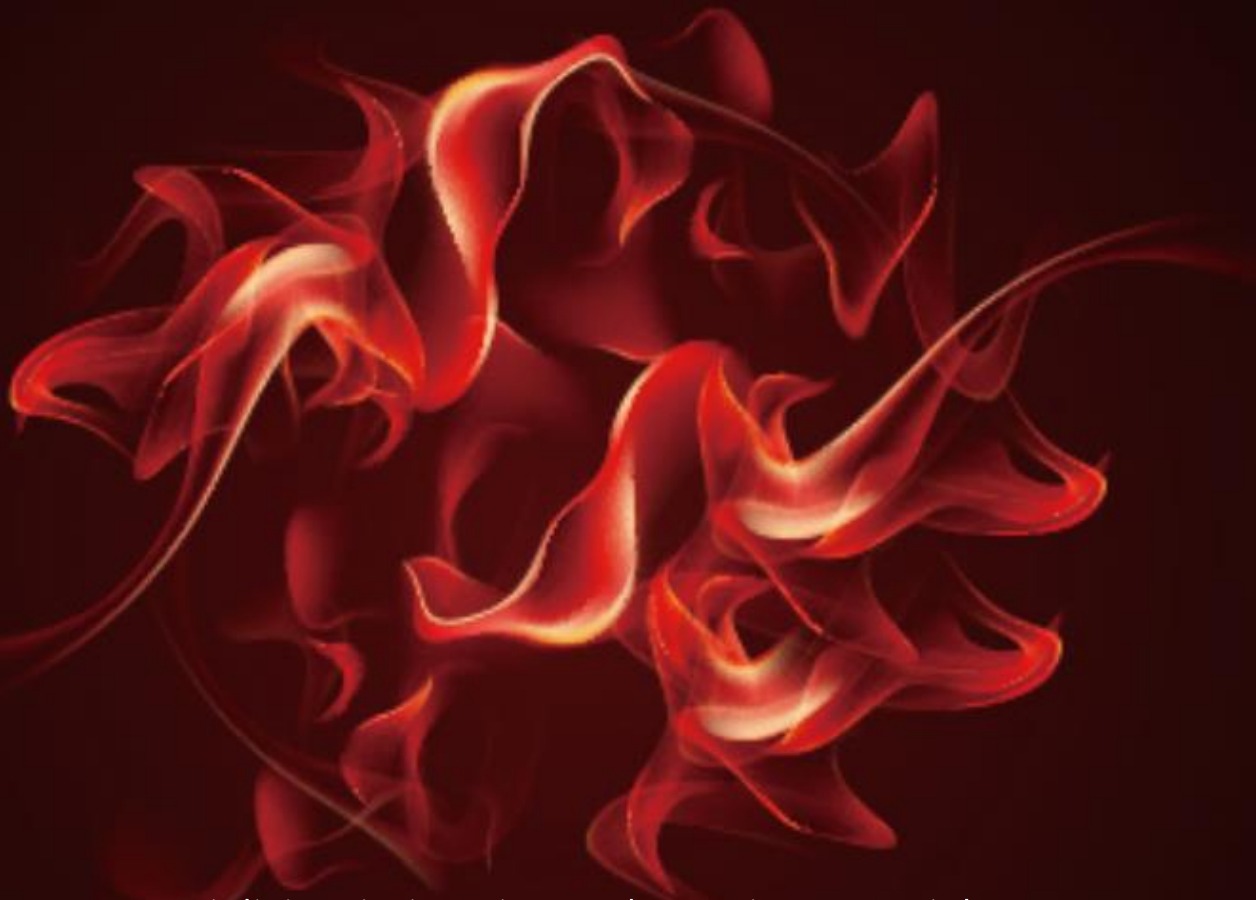


AenixZ

AenixZ BOARD SOLUTION

Vision of

It is leading the market with a new paradigm with eco- friendly furniture and interior building materials with beautiful and practical design and functionality. Now I suggest a space with different senses. We will be reborn as a company that approaches itself and all stakeholders around us more closely, communicates sincerely, and receives strong trust and love.



A company specializing in interior and exterior materials designed to prevent fire spread with environmentally friendly construction materials

We manufacture and sell non-combustible, semi-non-combustible, and fire-resistant products with fireproof properties to prevent the spread of fire among interior finishes closely exposed in our daily lives

The Future.

To develop the social value of safety,
we will make every effort to produce safe materials.

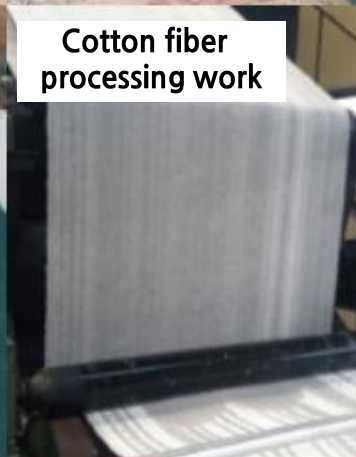
Nitrogen mixing work



**Disassembly work of
cotton fiber yarn**



**Cotton fiber
processing work**



**Stencil sheet
work**



Equipment and factory facilities

We prioritize in-house production and eco-friendliness to supply top-quality products, continuously verifying each step until customer satisfaction is achieved. Leveraging our equipment and technical expertise, we manufacture products more efficiently.





Possessing diverse technical capabilities

- Board trimming operation
- Bulk inventory procurement
- Rapid delivery
- In-house cutting at the factory
- Edge treatment operations
- Blueprint design work
- Consultation with skilled installers
- Developing secondary processed product

ECO

Flame proofing plate

In the event of a fire, flame-resistant plates block flames and toxic gases for a long time to secure rescue time and prevent further spread and casualties.



Back to nature

AenixZ Aiming for Eco-Friendly Products

In line with international agreements and government policies, AenixZ is building a voluntary and active eco-friendly production system throughout the production process from raw materials to finished products. Based on the accumulated know-how in manufacturing eco-friendly materials and cooperation with professional research institutes consisting of experts related to the environment and industry, all experts, including product planning and R&D, strive to create an eco-friendly space.

Product Index.

POSTON BOARD

Artificial marble for internal and external use

The organic colors and natural stone patterns make it a stylish and safe interior board.



FLAMEPROOF BOARD

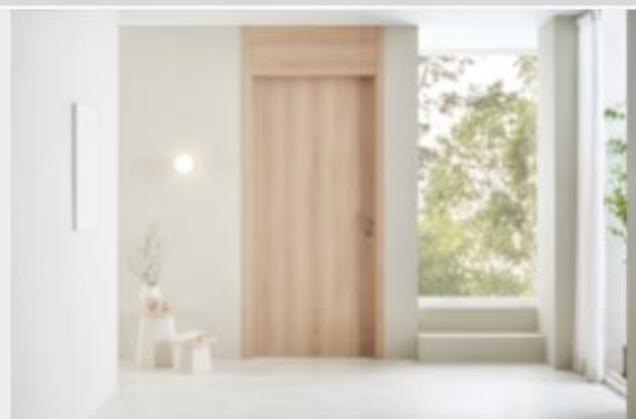
Interior material, Ceiling tex

In the event of a fire, it secures rescue time and further spread and casualties by blocking secondary.

HOME DOOR

Interior/external door

The door not only serves as a design element for space separation but also functions as a means to prevent the spread of toxic gases in case of a fire and to protect the space as a temporary shelter.



Contents

01

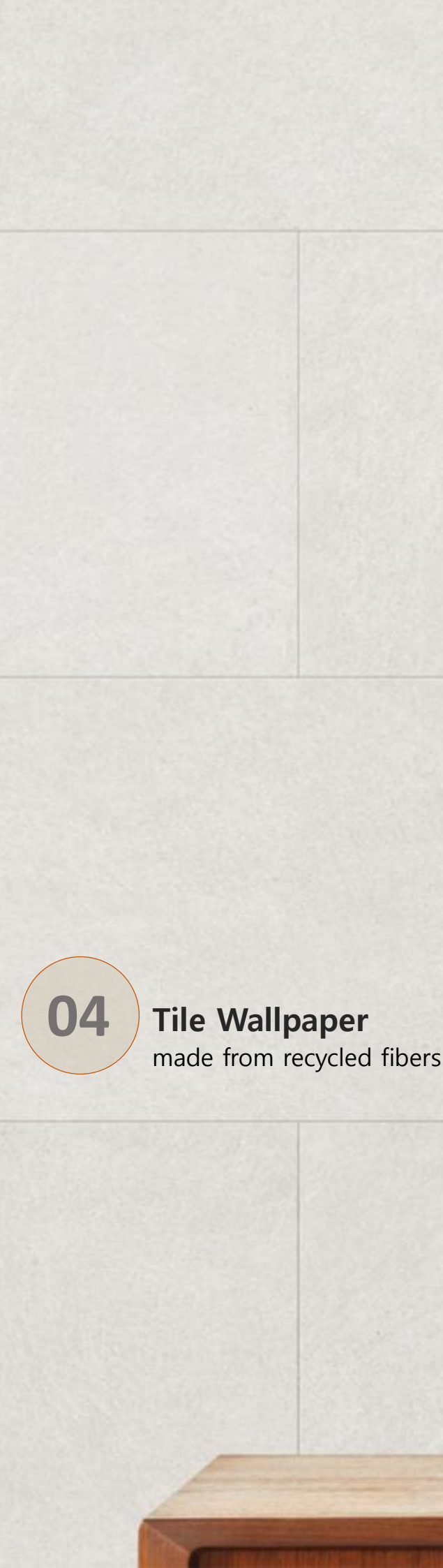
Poston Board
Artificial marble

02

Ceiling tex tiles
Safe flameproof board

03

**Sound Absorption
Tex tiles**
Fire-resistant boards
made from recycled fibers



04

Tile Wallpaper
made from recycled fibers



05

Poston
Functional lightweight boards



06

HOME DOOR
Safe flameproof door

POSTONE

AenixZ

Artificial marble Board

This composite material is formed by thinly coating an eco-friendly binder and natural minerals on a durable calcium silicate board, incorporating recycled fibers. Various artificial marble patterns are created through this process. Additionally, it allows for embossed patterns, enabling the reproduction of the texture of real stone boards. It is resistant to heat or harsh humidity, possessing excellent fire resistance and dimensional stability. This environmentally friendly semi-non-combustible board does not contain any harmful substances.

Artificial marble Board



FOSTONE

Artificial marble

SPECIAL FEATURES



Eco Friendly Materials

Made from natural stone particles and eco-friendly binders



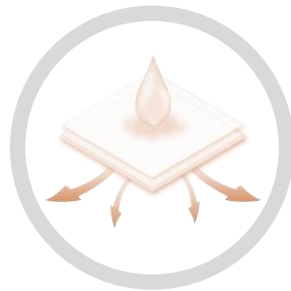
Non-combustible Board

No toxic gas emissions upon combustion



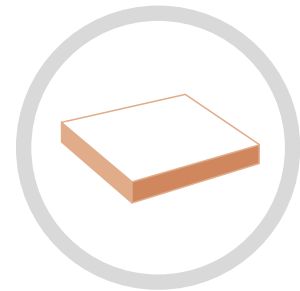
Simple Construction

Can be installed on-site using tackifiers and bonding agents



Moisture proof

Absorbs moisture in spring and summer, releases moisture in winter.



Efficiency

Exterior and interior materials that require no additional finishing treatment



FOSTONE

Artificial marble

RANGE OF USE

Interior Materials



Building Exterior Material



FOSTONE

Artificial marble

Color variations of artificial marble



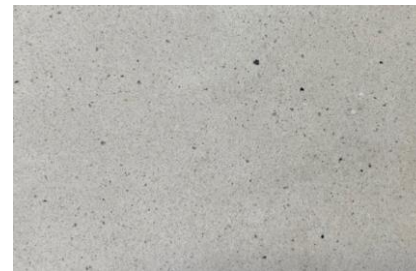
SW-01 WHITE



SW-02 SHADOW WHITE



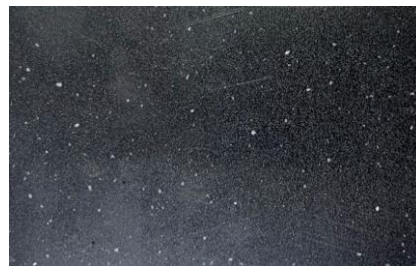
SW-03 IVORY



SW-04 LIME SILVER



SW-05 MADRE GRAY



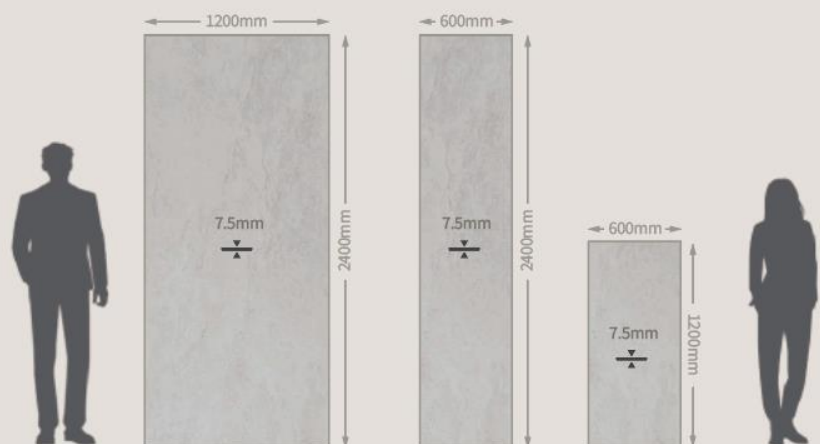
SW-06 NEVADA BLACK

Production specifications - Interior materials

600 x 1200 x 7.5mm

600 x 2400 x 7.5mm

1200 x 2400 x 7.5mm





Grande Marble White



Mocha Cream 2



Grande Lake Gray



Tribeton Light 2



Soft Stone Cream



Salt Beige



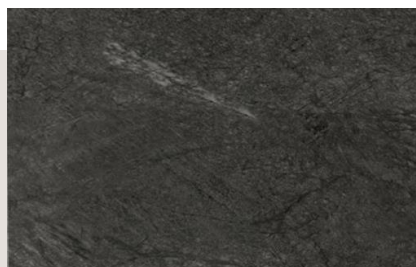
Traverton 2



White Traverton



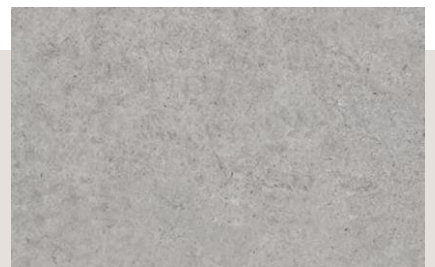
Terra Mo Gray



Soft Stone Black



Oasis Gray



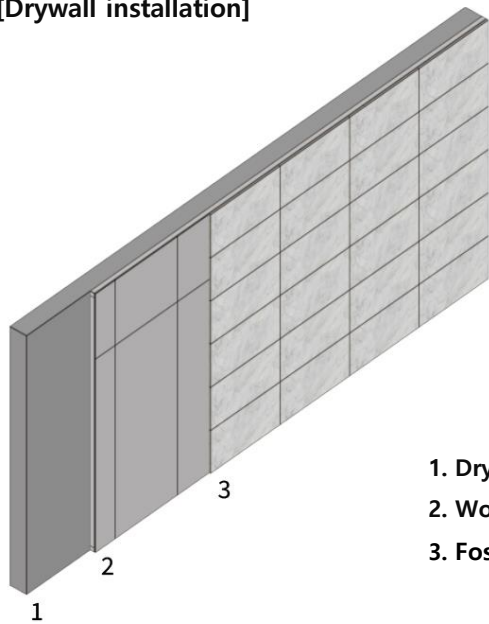
Grande Cozy Shadow

FOSTONE

Artificial marble

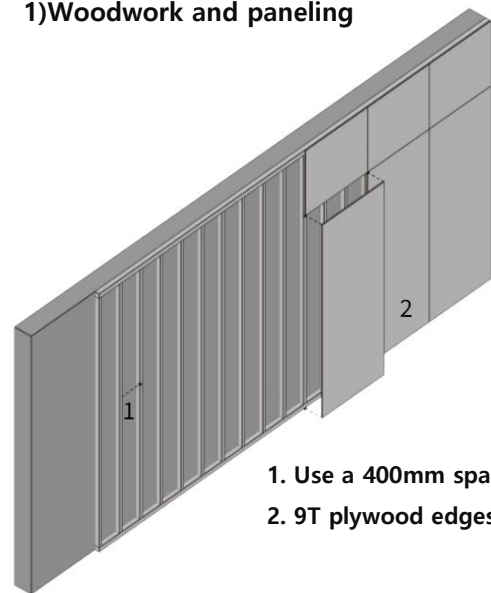
CONSTRUCTION GUIDE – Wall panels

[Drywall installation]



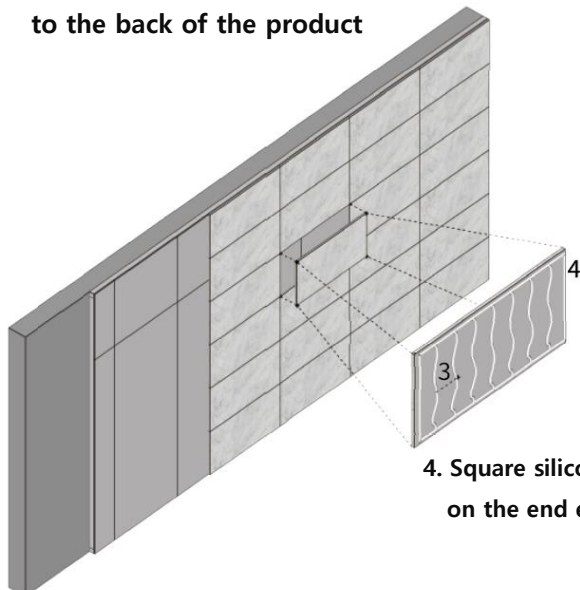
1. Drywall
2. Woodwork
3. Fostone board

1) Woodwork and paneling



1. Use a 400mm spacing
2. 9T plywood edges

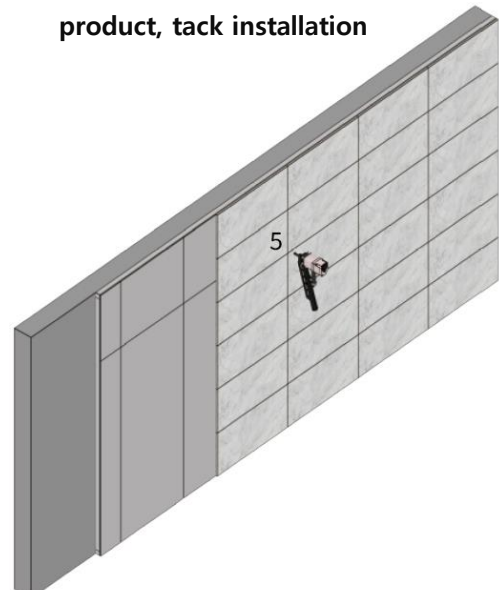
2) Attachment after applying adhesive to the back of the product



4. Square silicone work on the end edges

3. Adhesive applied in a zigzag pattern on the back of the product (150mm interval bead bonding)

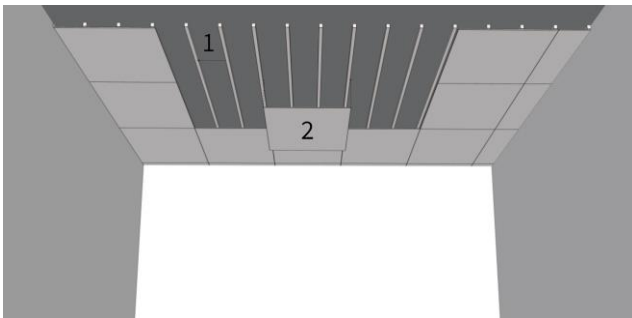
3) After applying adhesive to the product, tack installation



5. Secure the product with 18mm stainless steel tacks, spaced 100mm apart on all sides.

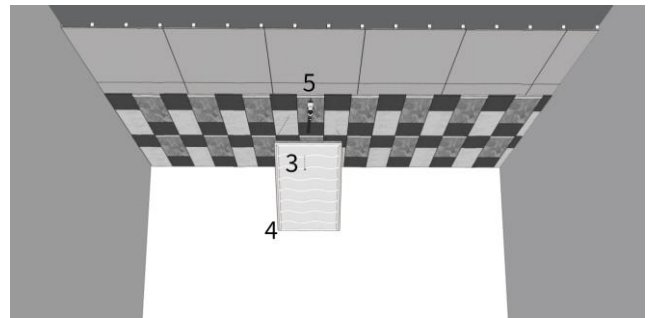
CONSTRUCTION GUIDE – Ceiling & floor

1) Woodwork and paneling



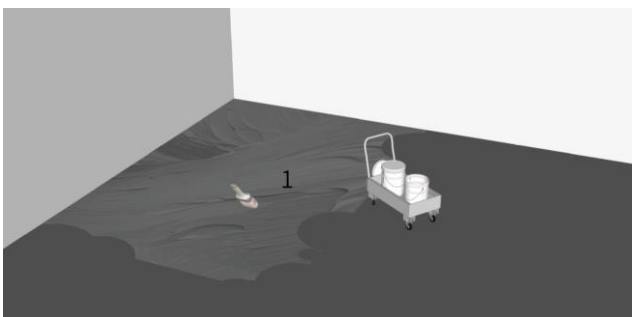
1. Use a 400mm spacing
2. 9T plywood edges
3. Attachment after applying adhesive to the back of the product (150mm Interval bead bonding)
4. Silicone work on the square edges

2) Attachment after applying adhesive to the back of the product



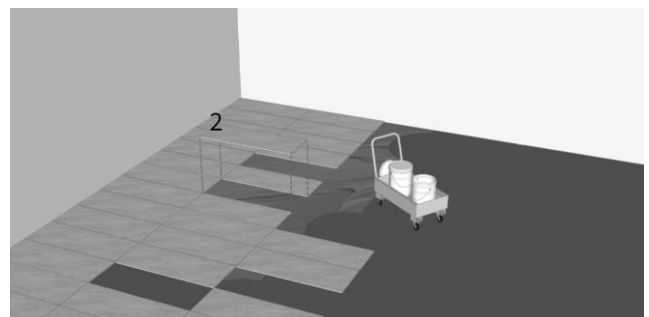
5. Secure the product with 18mm stainless steel tacks, spaced 100mm apart on all sides.
(Fix the staples firmly at intervals matching the reference points)

1) Floor adhesive application



1. Pour adhesive onto the floor and spread it evenly across the entire surface using a brush or similar tool

2) Attach the product to the adhesive space applied on the floor

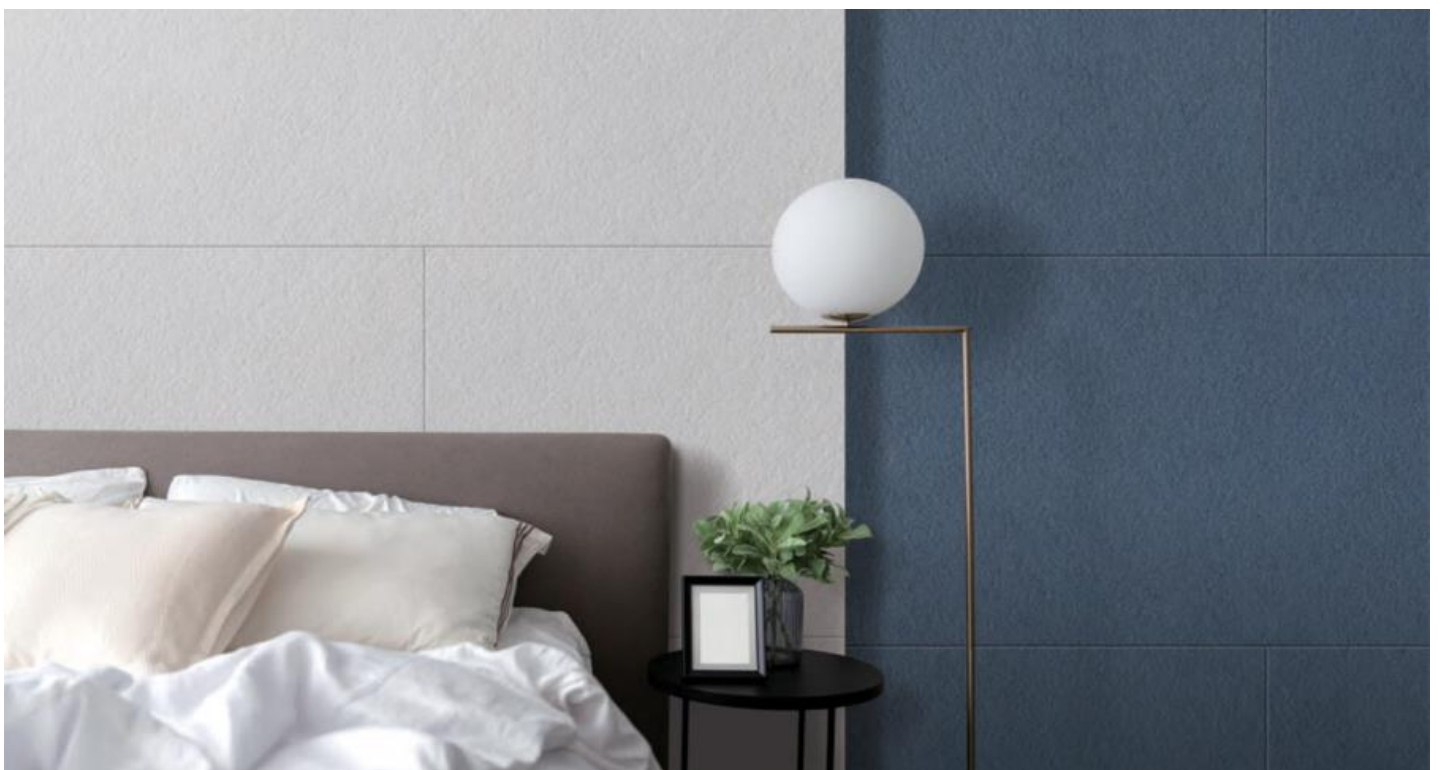


2. Attach the product to the adhesive-coated floor surface.
(The standard dimensions of the product during floor installation are 600mm in width and height)

FOSTONE

Artificial marble

Installation examples and application images of Porstone boards



Installation examples and application images of Porstone boards





TEXTILE I

AenixZ

Conventional ceiling textile
made from recycled fibers

This product incorporates boards manufactured by our company, ensuring semi-non-combustibility and E0-grade eco-friendliness. The material undergoes molding, and the embossed surface is electronically printed to prevent contamination and ensure color consistency. It is an environmentally friendly product with no emission of environmental hormones. Unlike traditional gypsum boards, it produces minimal dust during installation due to its lightweight construction, thus offering exceptional convenience in installation.

TEX TILE I

Conventional ceiling textile
made from recycled fibers

SPECIAL FEATURES



Eco-friendly Semi-combustible tex tile

Fireproof boards delay the spread of flames and suppress smoke emissions as much as possible, ensuring safety and protecting precious lives and property in the event of a fire

[Eco-friendliness] 100% Environmentally friendly semi-flammable finish board

[Incombustibility] Indoor finishing walls, ceilings, back non-combustible finishing materials

[Moisture resistance] Very little sagging due to temperature and moisture

[Constructability] It's easy to cut, so it's easy to construct

[Economic feasibility] It can be separated individually before and after the ceiling installation, making it easy to repair

Advantage



Sagging resistance



Acoustic absorption



Dimensional stability



Constructability



Easy maintenance



High reflectance of light



Harmlessness



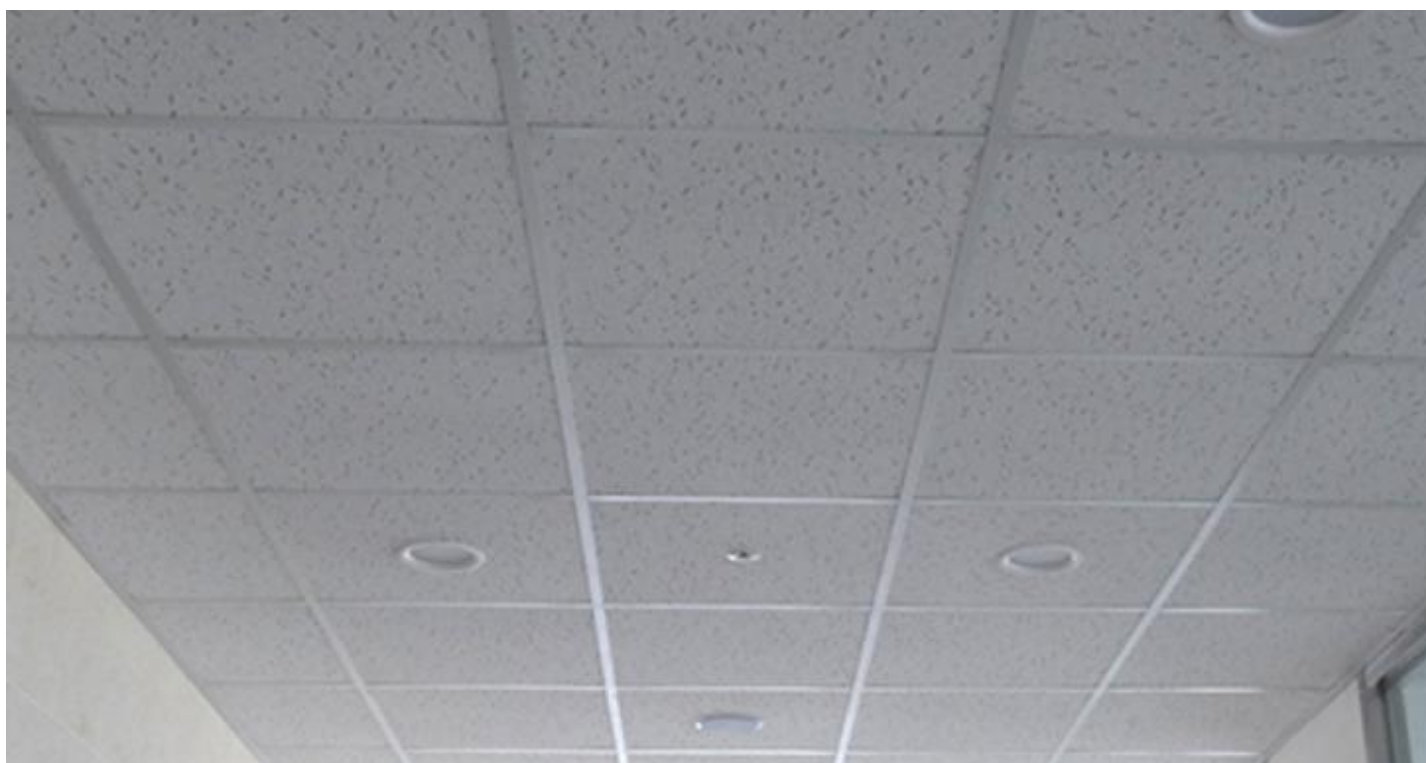
Sound insulation

TEX TILE I

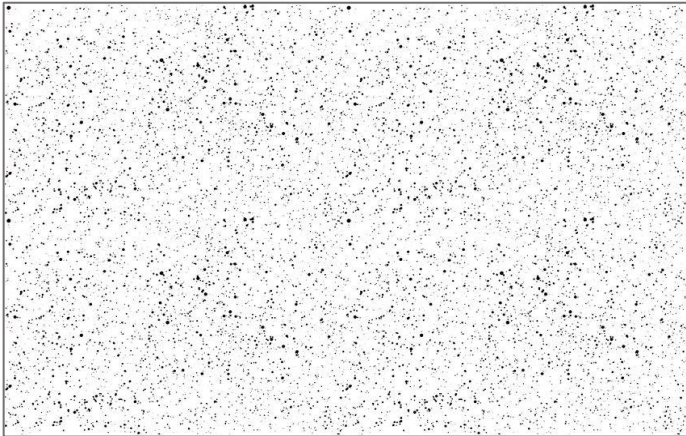
Conventional ceiling textile
made from recycled fibers

RANGE OF USE

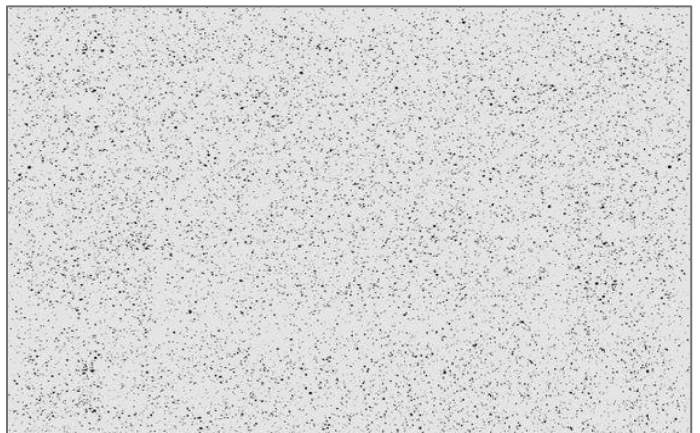
Interior Materials



Color variations of ceiling tex tile



SW-01 WHITE



SW-02 LIGHT GRAY

Production specifications

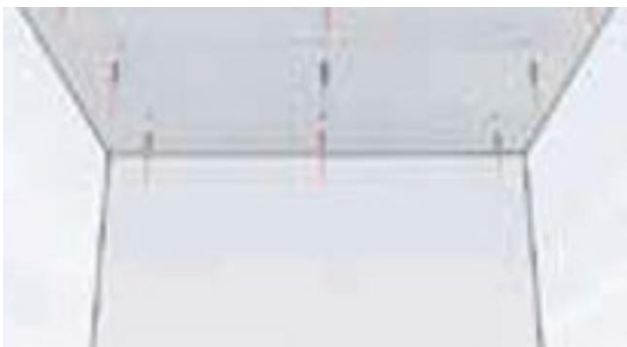
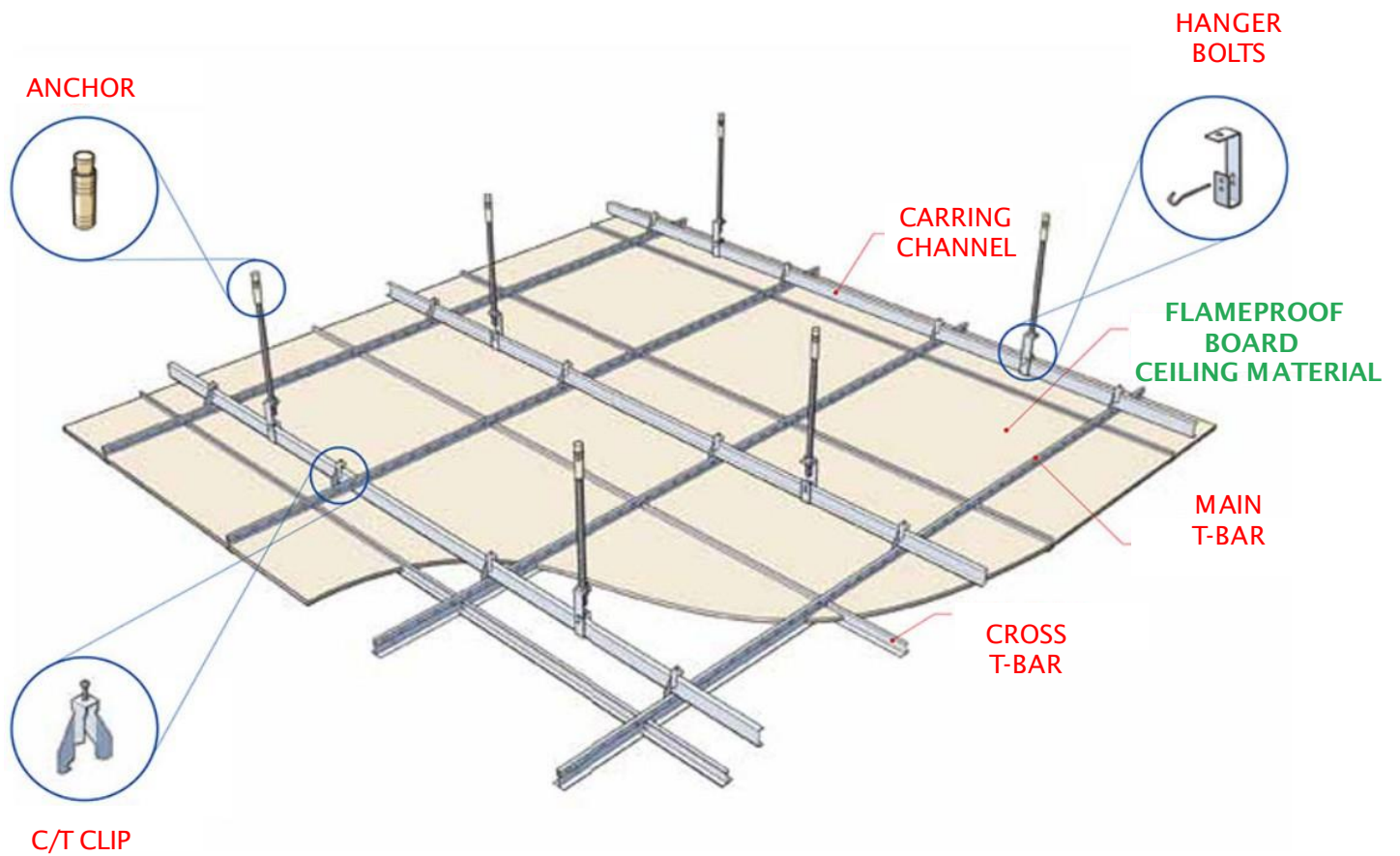
300 x 600 x 4mm



TEX TILE I

Conventional ceiling textile
made from recycled fibers

CONSTRUCTION GUIDE

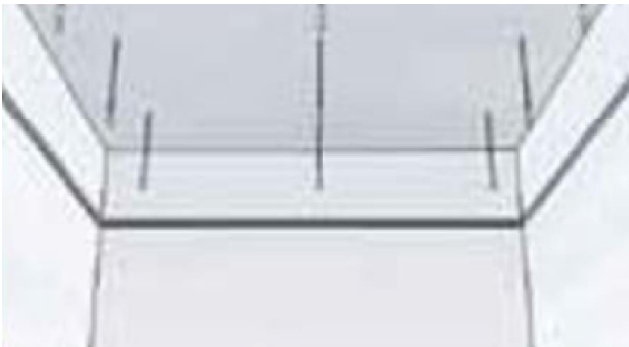


1. CENTERLINE ESTABLISHMENT AND ANCHOR CONSTRUCTION

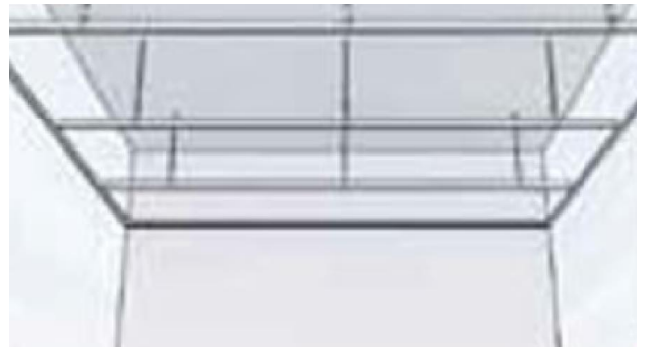


2. FRAME MOLDING CONSTRUCTION

CONSTRUCTION GUIDE



3. HANGER BOLTS AND HANGER CONSTRUCTION



4. CARRING CHANNEL CONSTRUCTION



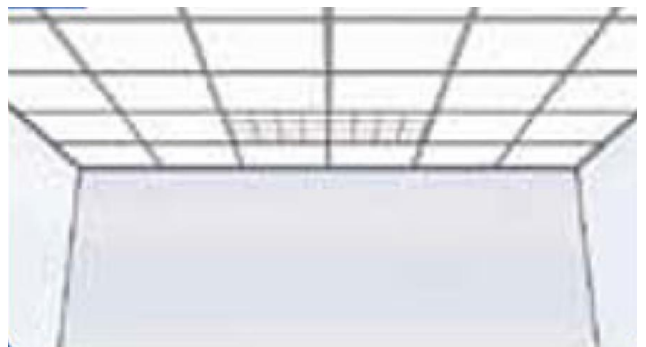
5. MAIN T-BAR CONSTRUCTION



6. CROSS T-BAR CONSTRUCTION



7. CONSTRUCTION OF FLAMEPROOF BOARD CEILING MATERIAL



8. CONSTRUCTION COMPLETED

TEX TILE I

Conventional ceiling textile
made from recycled fibers

Ceiling tex tile installation examples and application images



Ceiling tex tile installation examples and application images



TEX TILE II

AenixZ

Sound absorption panel
made from recycled fibers

This product incorporates boards manufactured by blending recycled cotton fiber material with expanded polystyrene and porous inorganic materials, ensuring semi-non-combustibility and E0-grade eco-friendliness. The material undergoes molding, and the embossed surface is electronically printed to prevent contamination and maintain consistent color. It is an environmentally friendly product with no emission of environmental hormones, setting it apart from traditional gypsum boards. Its lightweight construction minimizes dust during installation, offering exceptional convenience.

Additionally, this product comprises two layers of fiberboards combined with nonwoven fabric on the perforated surface, resulting in a finished product after transfer and finishing



TEX TILE II

Conventional ceiling textile made from recycled fibers

SPECIAL FEATURES



Eco Friendly Materials

Made from natural stone particles and eco-friendly binders



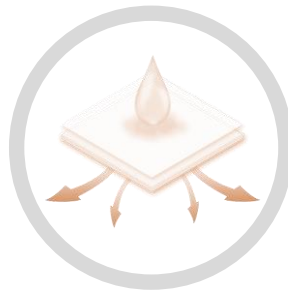
Non-combustible Board

No toxic gas emissions upon combustion



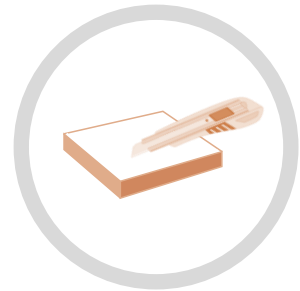
Simple Construction

Can be installed on-site using tackifiers and bonding agents



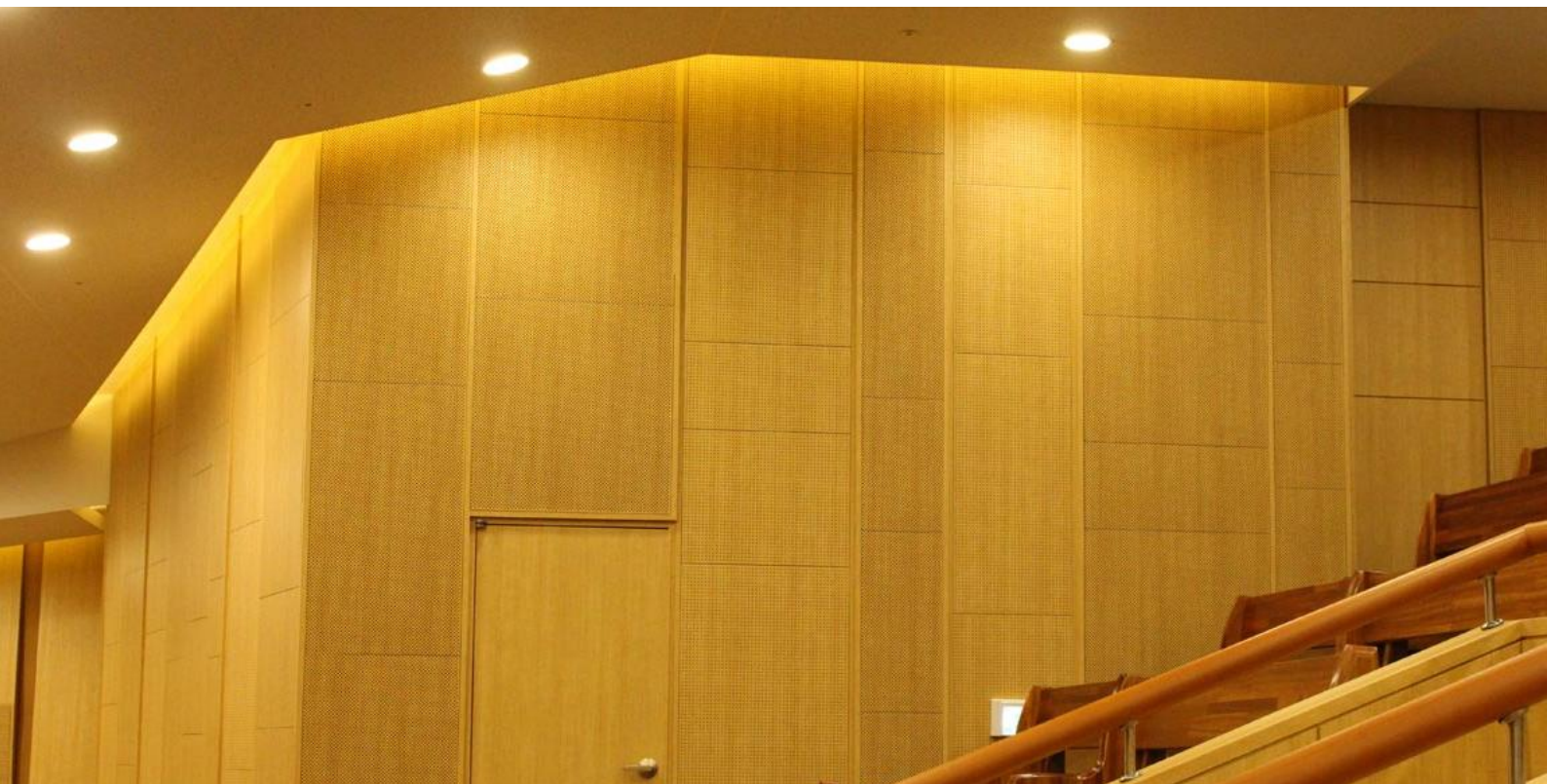
Moisture proof

Absorbs moisture in spring and summer, releases moisture in winter.



Efficiency

Exterior and interior materials that require no additional finishing treatment



TEX TILE II

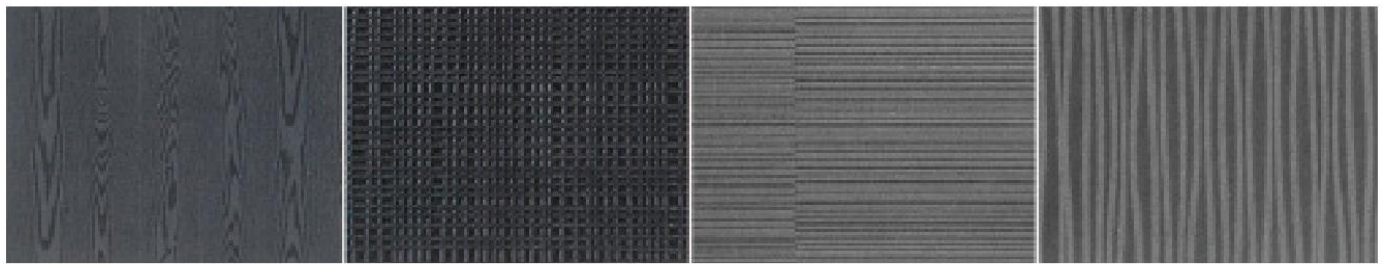
Conventional ceiling textile made from recycled fibers

Sound absorption panel Eco-friendly sound-absorbing panel



Embo Board

1200 x 2400 mm



CLASSIC WOOD

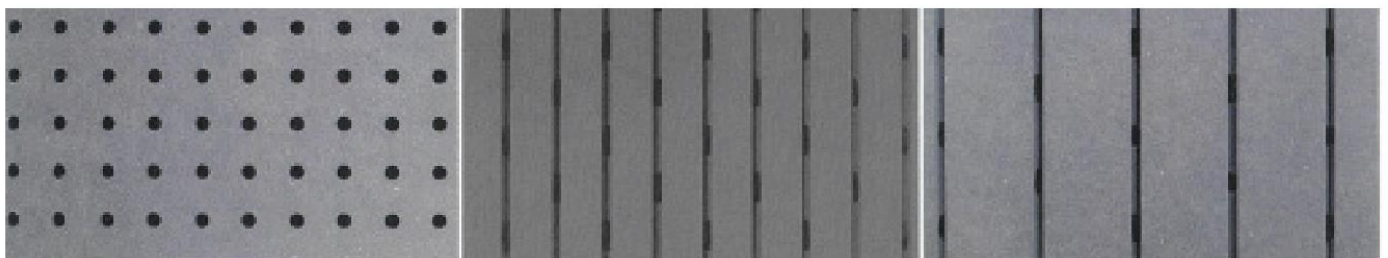
FABRIC 1

FABRIC 2

OCEAN 1

Sound Absorption Board

1184 x 2400 mm



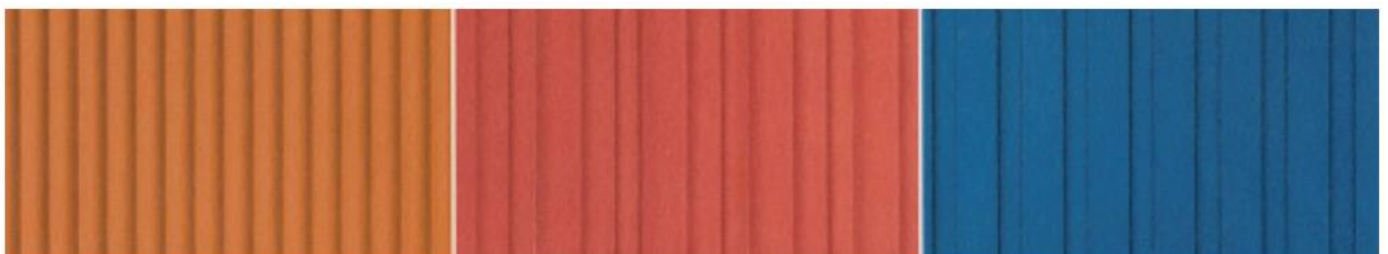
SINGLE PUNCH

LINE PUNCH 16P

LINE PUNCH 32P

Temba Board

1200 x 2400 mm



HALF-MOON

HALF-MOON RANDOM

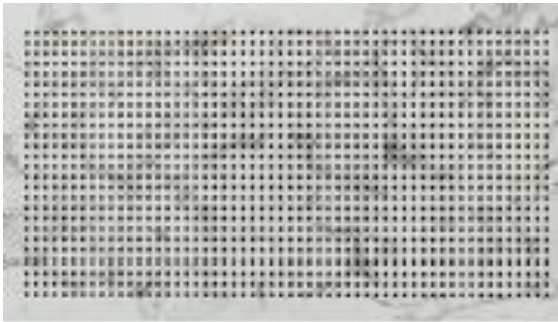
SQUARE

Sound absorption panel made from recycled fibers

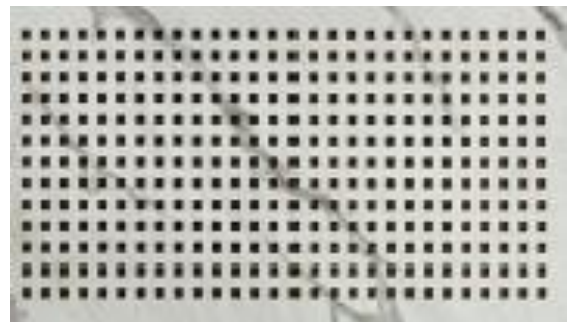
Various colors and patterns

There are a wide range of choices with various types of artificial marble and takong patterns.

(In addition to the above photos, various patterns and colors can be applied after consultation.)



01



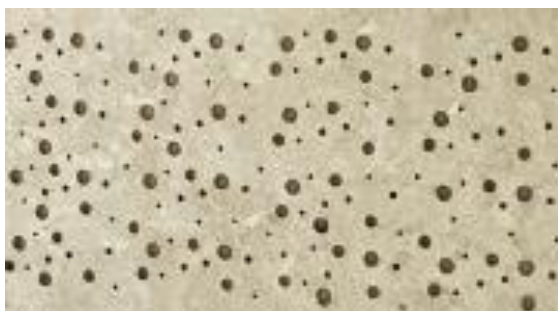
02



03



04



05

[Production Standrad]

1200 x 2400 x 4.5mm

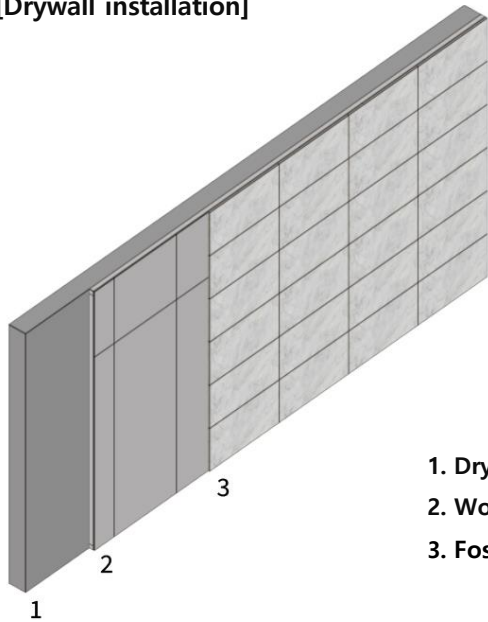


TEX TILE I

Conventional ceiling textile
made from recycled fibers

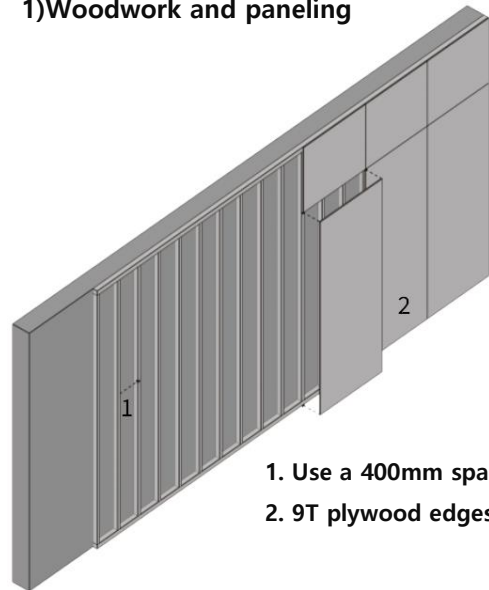
CONSTRUCTION GUIDE – Wall panels

[Drywall installation]



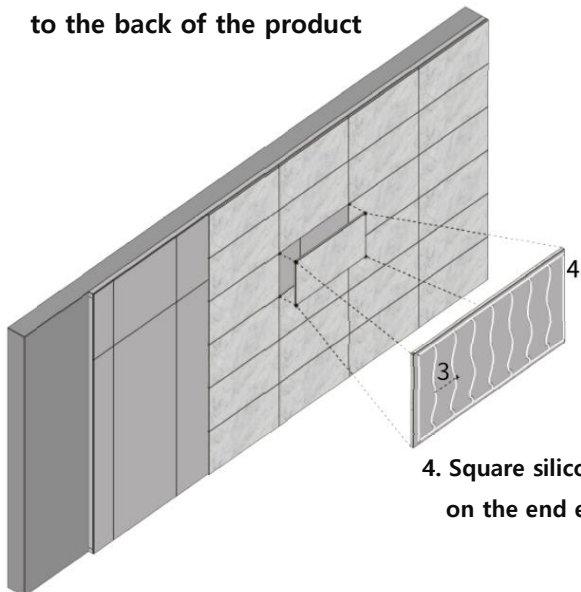
- 1. Drywall
- 2. Woodwork
- 3. Foston board

1) Woodwork and paneling



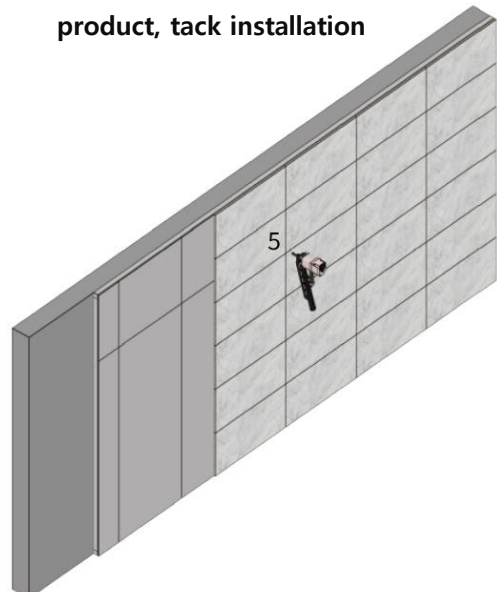
- 1. Use a 400mm spacing
- 2. 9T plywood edges

2) Attachment after applying adhesive to the back of the product



- 4. Square silicone work on the end edges

3) After applying adhesive to the product, tack installation

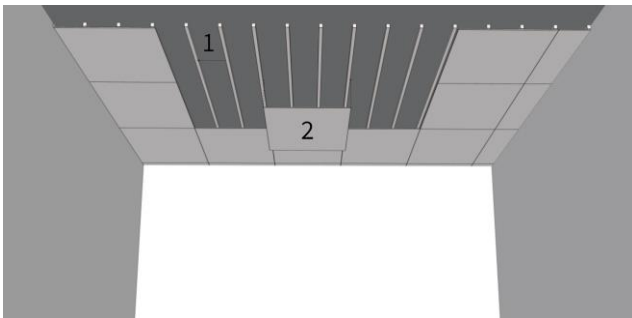


- 3. Adhesive applied in a zigzag pattern on the back of the product (150mm interval bead bonding)

- 5. Secure the product with 18mm stainless steel tacks, spaced 100mm apart on all sides.

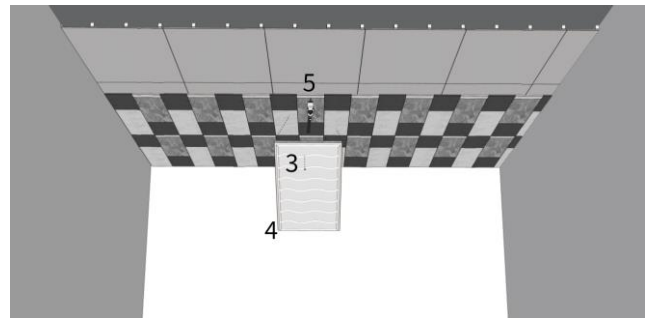
CONSTRUCTION GUIDE – Ceiling & floor

1) Woodwork and paneling



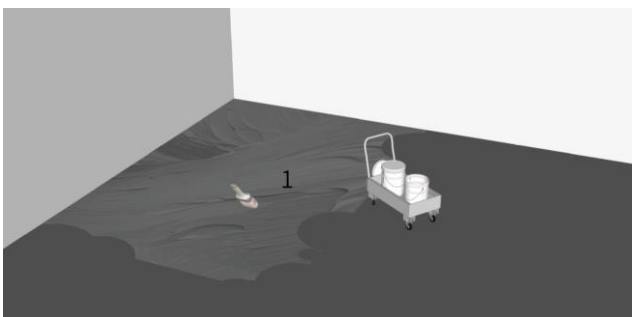
1. Use a 400mm spacing
2. 9T plywood edges
3. Attachment after applying adhesive to the back of the product (150mm Interval bead bonding)
4. Silicone work on the square edges

2) Attachment after applying adhesive to the back of the product



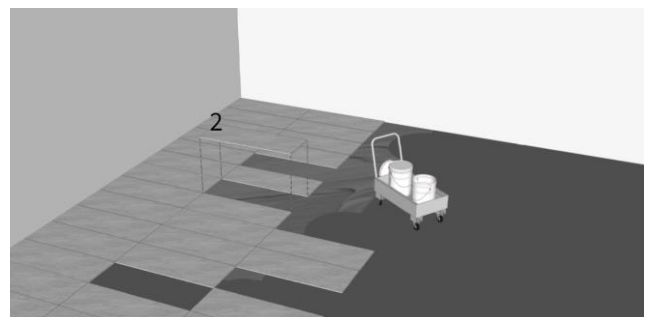
5. Secure the product with 18mm stainless steel tacks, spaced 100mm apart on all sides. (Fix the staples firmly at intervals matching the reference points)

1) Floor adhesive application



1. Pour adhesive onto the floor and spread it evenly across the entire surface using a brush or similar tool

2) Attach the product to the adhesive space applied on the floor



2. Attach the product to the adhesive-coated floor surface. (The standard dimensions of the product during floor installation are 600mm in width and height)

TEX TILE I

Conventional ceiling textile
made from recycled fibers

Installation examples and application images of acoustic boards



Installation examples and application images of acoustic boards





Wallpaper with a tile texture

AenixZ

Wallpaper made from recycled fibers

This product utilizes boards crafted from a blend of recycled cotton fibers, expanded polystyrene, and porous inorganic materials. It ensures semi-non-combustibility and achieves an E0-grade eco-friendly rating. Following embossing and electronic printing on the molded panel surface, it maintains consistent color and prevents contamination. Free from environmental hormone emissions, this product is environmentally friendly.

Featuring adhesive coating on the back, it offers seamless installation upon removing the sticker backing, providing convenience. Its compatibility with cutter knife cutting enhances installation flexibility. Finished with transferred fiberboard, this product allows embossing customization as needed

Wallpaper with a tile texture

made from recycled fibers

SPECIAL FEATURES



Eco Friendly Materials

Made from natural stone particles and eco-friendly binders



Non-combustible Board

No toxic gas emissions upon combustion



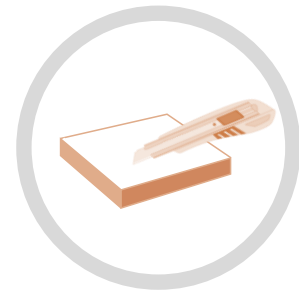
Simple Construction

Can be installed on-site using tackifiers and bonding agents



Light Weight materials

Made with lightweight and high-strength materials



Efficiency

Exterior and interior materials that require no additional finishing treatment



Wallpaper with a tile texture

made from recycled fibers

RANGE OF USE



Countertop, sink top, furniture surface polish

Furniture Materials

Suitable for installation in all areas
using tiles, such as
school corridors and walls

Interior Materials



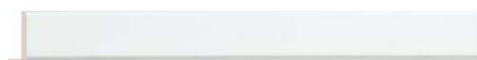
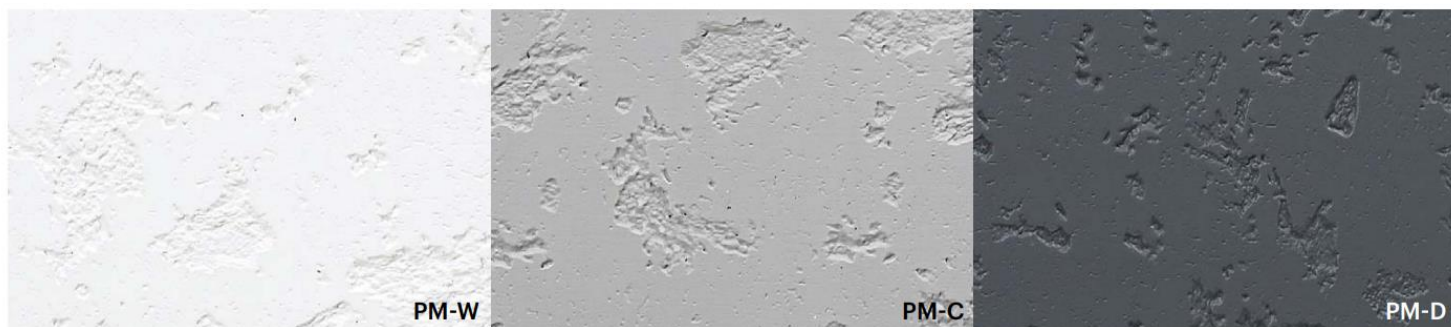
AenixZ Wallpaper with a tile texture



Wallpaper with a tile texture

made from recycled fibers

Color variations of wallpaper CONCRETE type



145-W (15x6) / 200-W (15x15)



145-C (15x6) / 200-C (15x15)



145-D (15x6) / 200-D (15x15)

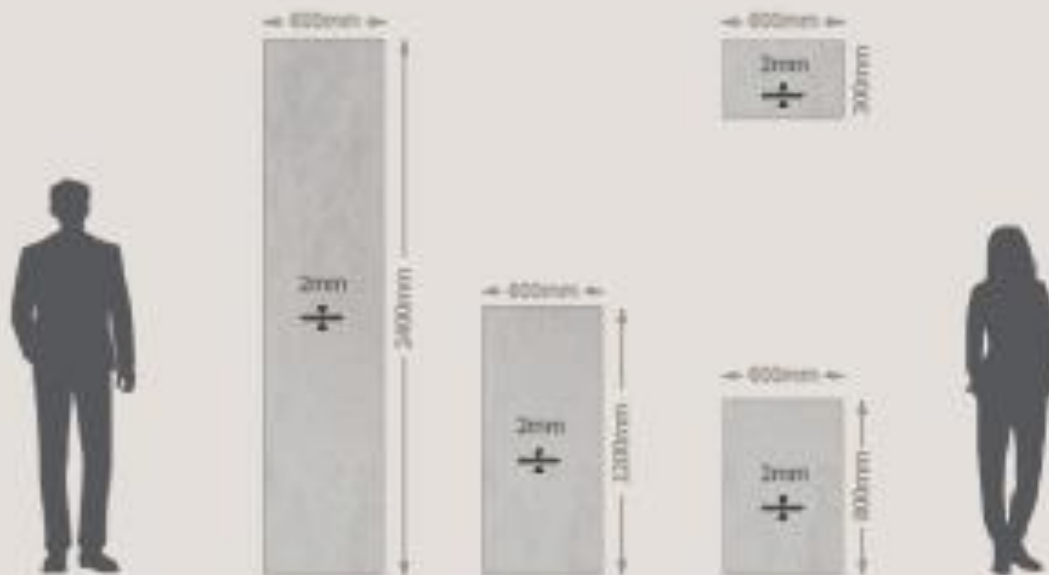
Production specifications

300 x 600 x 2T

600 x 800 x 2T

600 x 1200 x 2T

600 x 2400 x 2T



Color variations of wallpaper STONE type



145-2097 (15x6) / 200-2097 (15x15)



145-2095 (15x6) / 200-2095 (15x15)



145-2092 (15x6) / 200-2092 (15x15)



145-2090 (15x6) / 200-2090 (15x15)



STONE || 스톤 ||



145-SW (15x6) / 200-SW (15x15)



145-2094 (15x6) / 200-2094 (15x15)



145-2098 (15x6) / 200-2098 (15x15)



145-1647 (15x6) / 200-1647 (15x15)



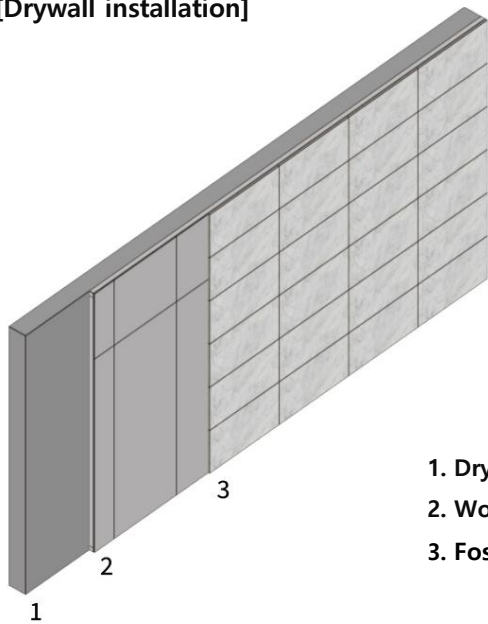
145-1646 (15x6) / 200-1646 (15x15)

Wallpaper with a tile texture

made from recycled fibers

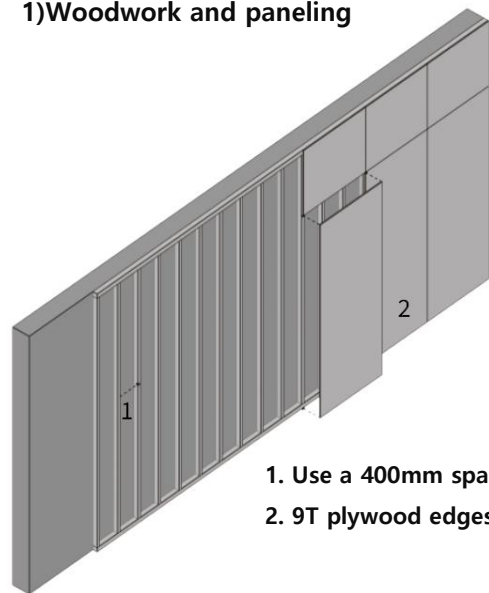
CONSTRUCTION GUIDE – Wall panels

[Drywall installation]



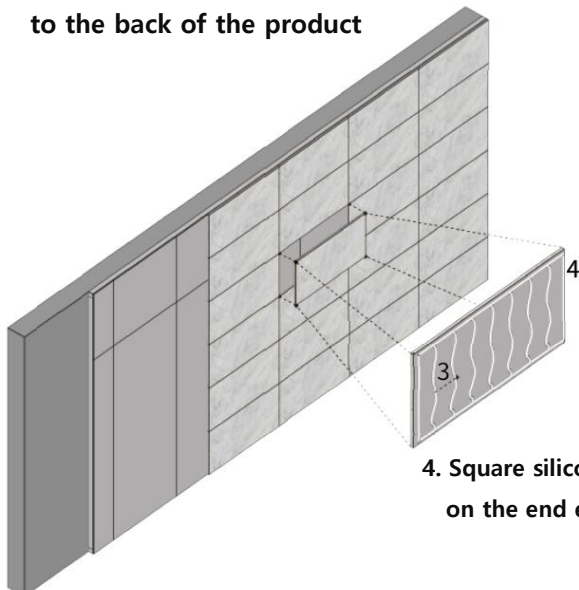
1. Drywall
2. Woodwork
3. Foston board

1) Woodwork and paneling



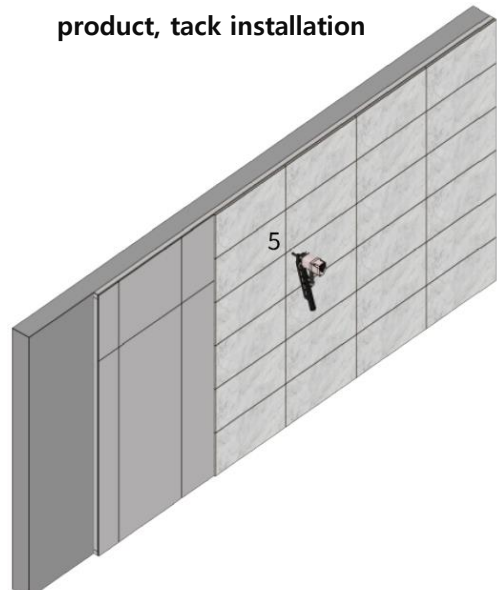
1. Use a 400mm spacing
2. 9T plywood edges

2) Attachment after applying adhesive to the back of the product



3. Adhesive applied in a zigzag pattern on the back of the product (150mm interval bead bonding)
4. Square silicone work on the end edges

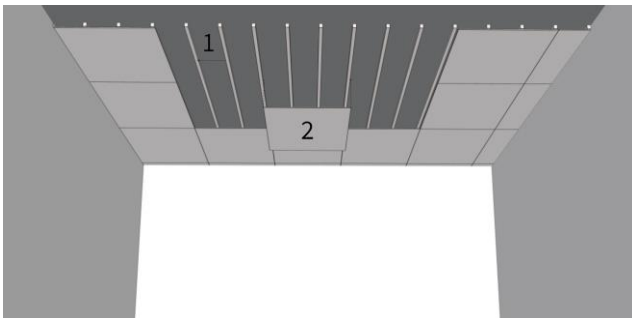
3) After applying adhesive to the product, tack installation



5. Secure the product with 18mm stainless steel tacks, spaced 100mm apart on all sides.

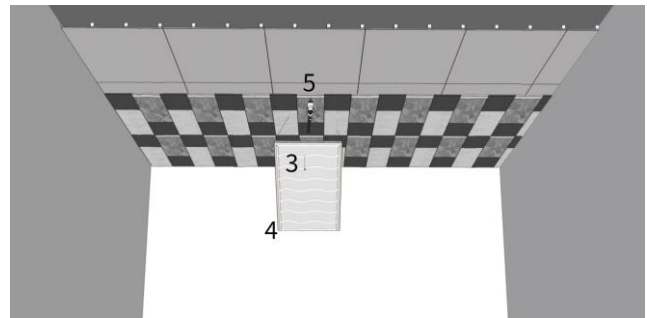
CONSTRUCTION GUIDE – Ceiling & floor

1) Woodwork and paneling



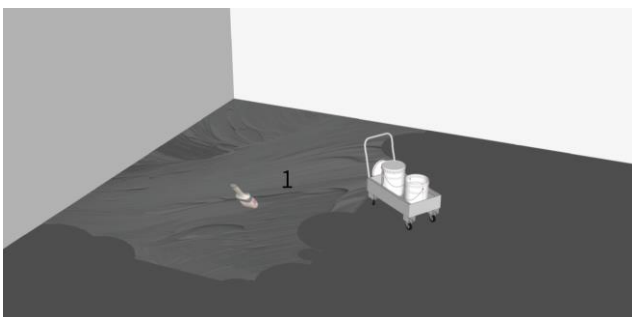
1. Use a 400mm spacing
2. 9T plywood edges
3. Attachment after applying adhesive to the back of the product (150mm Interval bead bonding)
4. Silicone work on the square edges

2) Attachment after applying adhesive to the back of the product



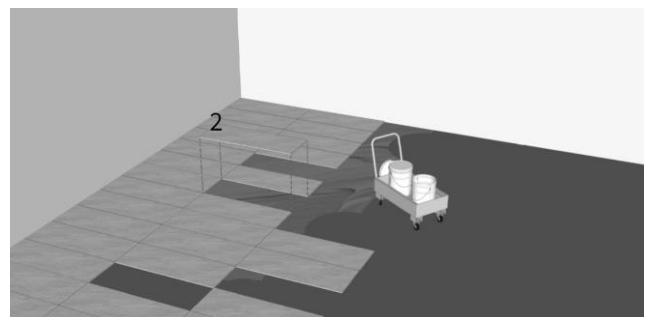
5. Secure the product with 18mm stainless steel tacks, spaced 100mm apart on all sides. (Fix the staples firmly at intervals matching the reference points)

1) Floor adhesive application



1. Pour adhesive onto the floor and spread it evenly across the entire surface using a brush or similar tool

2) Attach the product to the adhesive space applied on the floor

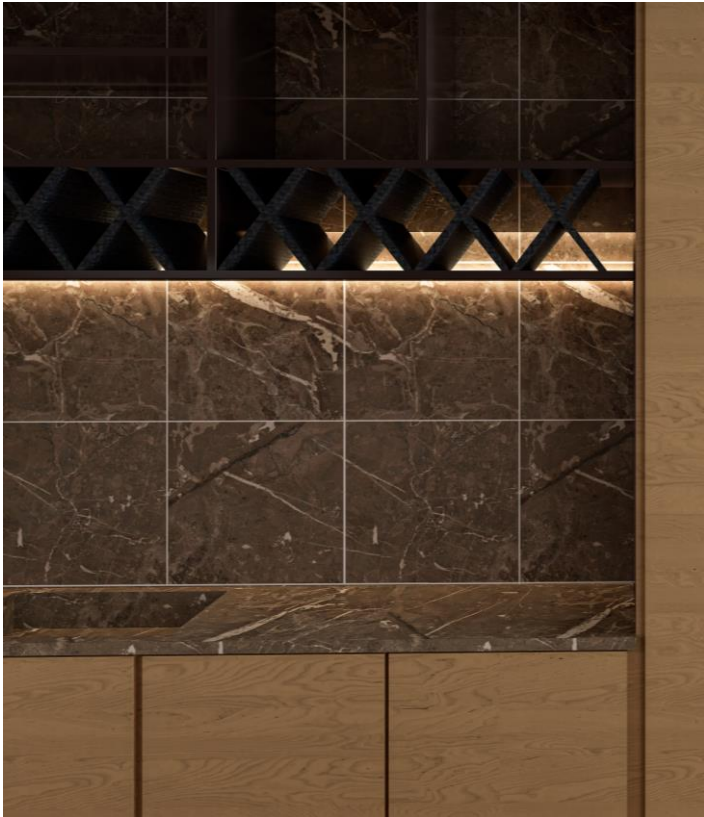


2. Attach the product to the adhesive-coated floor surface. (The standard dimensions of the product during floor installation are 600mm in width and height)

Wallpaper with a tile texture

made from recycled fibers

Installation examples and application images



AenixZ Wallpaper with a tile texture

Installation examples and application images



Desgin wall

AenixZ

Multi-functional mineral board

This functional board is a composite mineral board made from recycled fibers, mixed with natural minerals such as serpentine and yellow soil. It is thinly coated to allow for embossed patterns, enabling the replication of real stone or marble textures. Designed with adhesive stickers on the back for easy installation, it is a lightweight material. Moreover, by utilizing natural minerals, it emits far-infrared rays and negative ions, offering excellent deodorizing properties



DESIGN WALL

Multi-functional mineral board

SPECIAL FEATURES



Eco Friendly Materials

Made from natural stone particles and eco-friendly binders



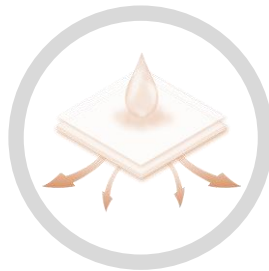
Non-combustible Board

No toxic gas emissions upon combustion



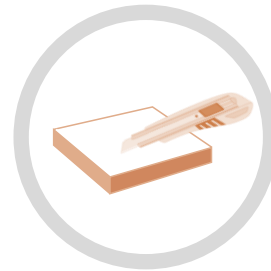
Simple Construction

Can be installed on-site using tackifiers and bonding agents



Moisture proof

Absorbs moisture in spring and summer, releases moisture in winter.



Efficiency

Exterior and interior materials that require no additional finishing treatment



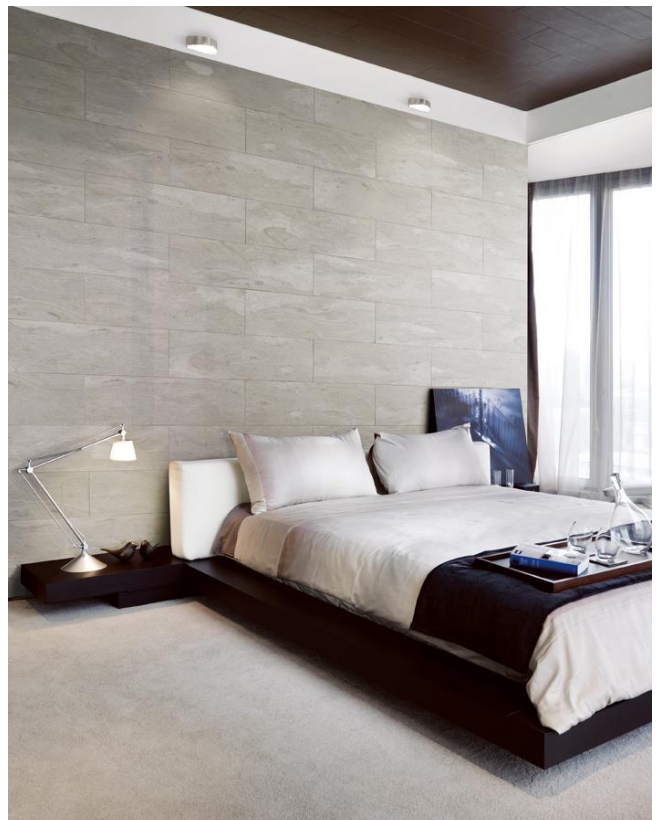
DESIGN WALL

Multi-functional mineral board

RANGE OF USE



Interior Materials



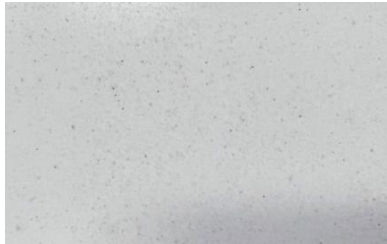
AenixZ Design wall



DESIGN WALL

Multi-functional mineral board

Color variations



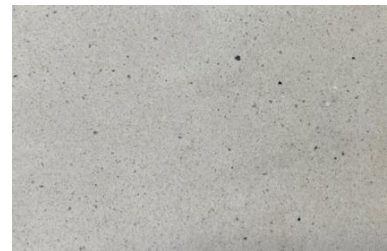
SW-01 WHITE



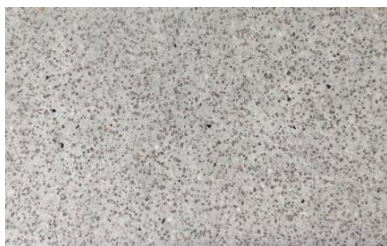
SW-02 SHADOW WHITE



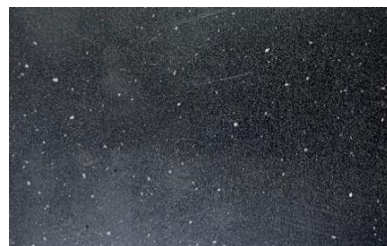
SW-03 IVORY



SW-04 LIME SILVER



SW-05 MADRE GRAY



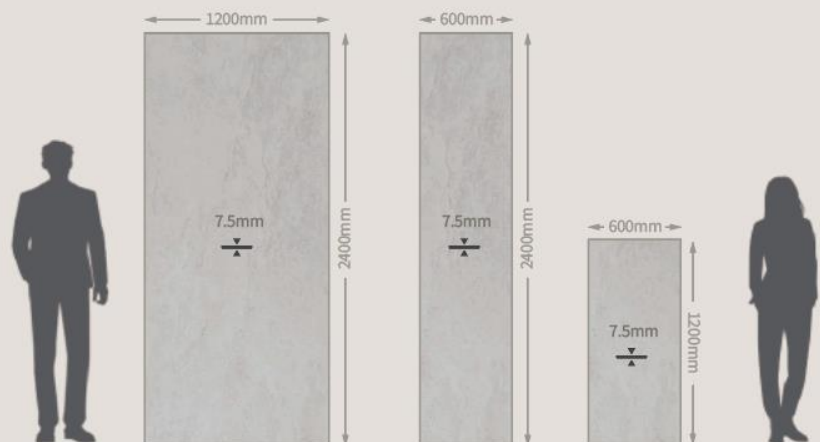
SW-06 NEVADA BLACK

Production specifications

600 x 1200 x 7.5mm

600 x 2400 x 7.5mm

1200 x 2400 x 7.5mm



AenixZ Design wall



Grande Marble White



Mocha Cream 2



Grande Lake Gray



Tribeton Light 2



Soft Stone Cream



Salt Beige



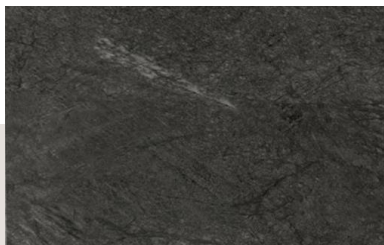
Traverton 2



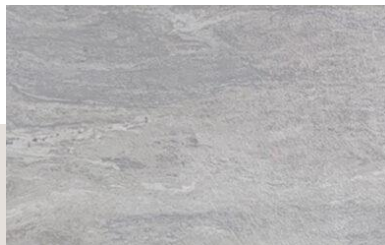
White Traverton



Terra Mo Gray



Soft Stone Black



Oasis Gray



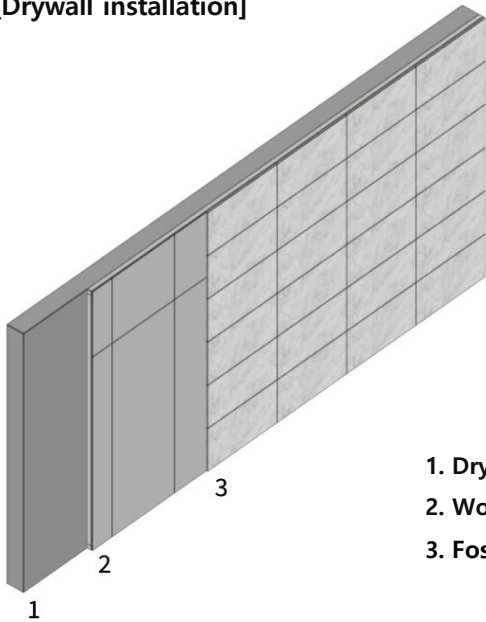
Grande Cozy Shadow

DESIGN WALL

Multi-functional mineral board

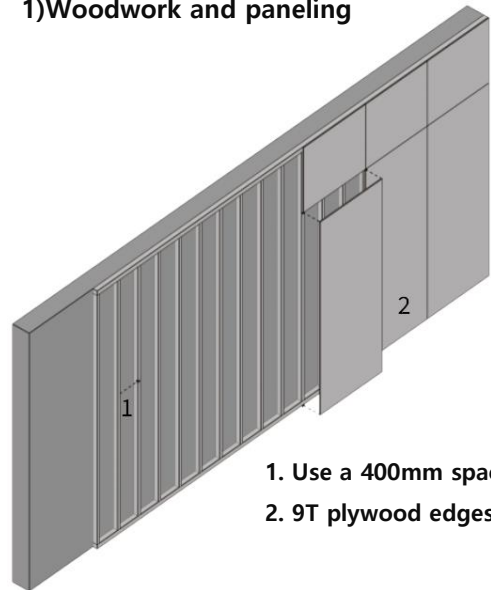
CONSTRUCTION GUIDE – Wall panels

[Drywall installation]



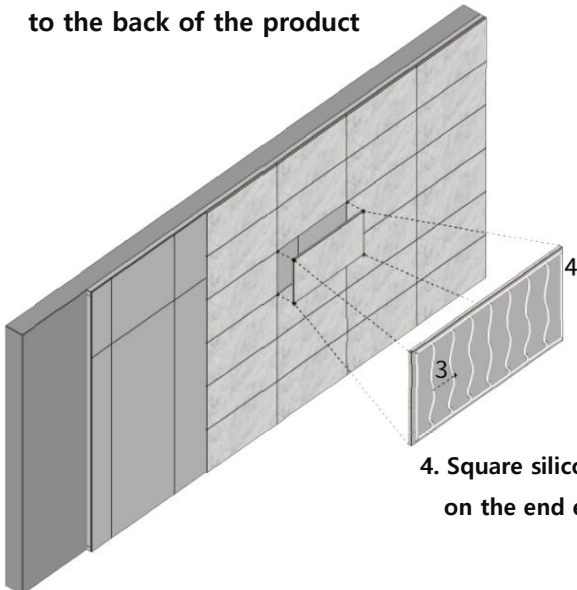
1. Drywall
2. Woodwork
3. Foston board

1) Woodwork and paneling



1. Use a 400mm spacing
2. 9T plywood edges

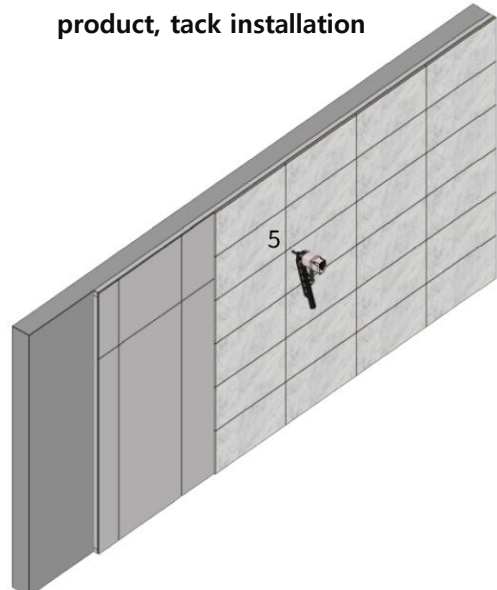
2) Attachment after applying adhesive to the back of the product



4. Square silicone work on the end edges

3. Adhesive applied in a zigzag pattern on the back of the product (150mm interval bead bonding)

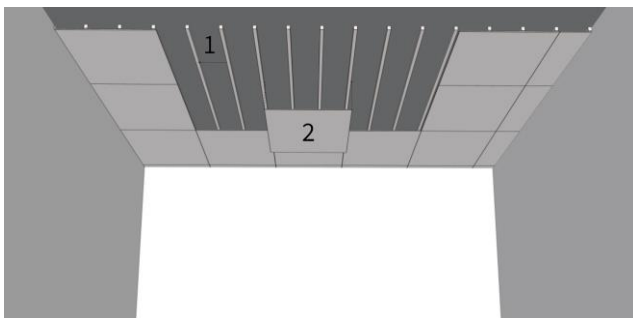
3) After applying adhesive to the product, tack installation



5. Secure the product with 18mm stainless steel tacks, spaced 100mm apart on all sides.

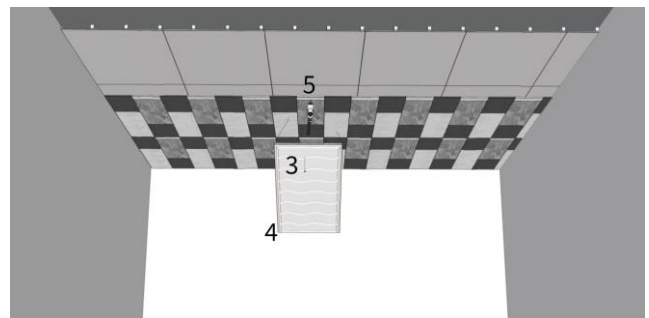
CONSTRUCTION GUIDE – Ceiling & floor

1) Woodwork and paneling



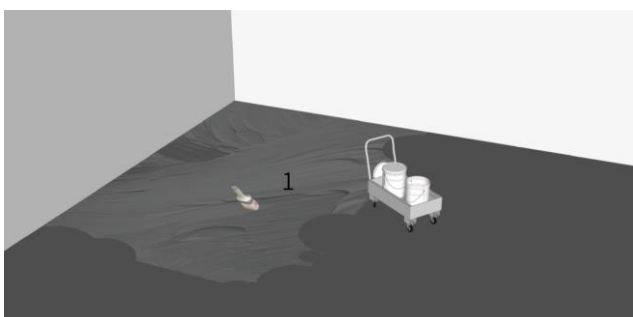
1. Use a 400mm spacing
2. 9T plywood edges
3. Attachment after applying adhesive to the back of the product (150mm Interval bead bonding)
4. Silicone work on the square edges

2) Attachment after applying adhesive to the back of the product



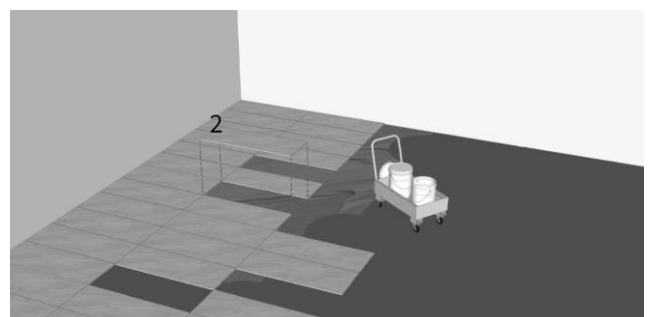
5. Secure the product with 18mm stainless steel tacks, spaced 100mm apart on all sides. (Fix the staples firmly at intervals matching the reference points)

1) Floor adhesive application



1. Pour adhesive onto the floor and spread it evenly across the entire surface using a brush or similar tool

2) Attach the product to the adhesive space applied on the floor



2. Attach the product to the adhesive-coated floor surface. (The standard dimensions of the product during floor installation are 600mm in width and height)

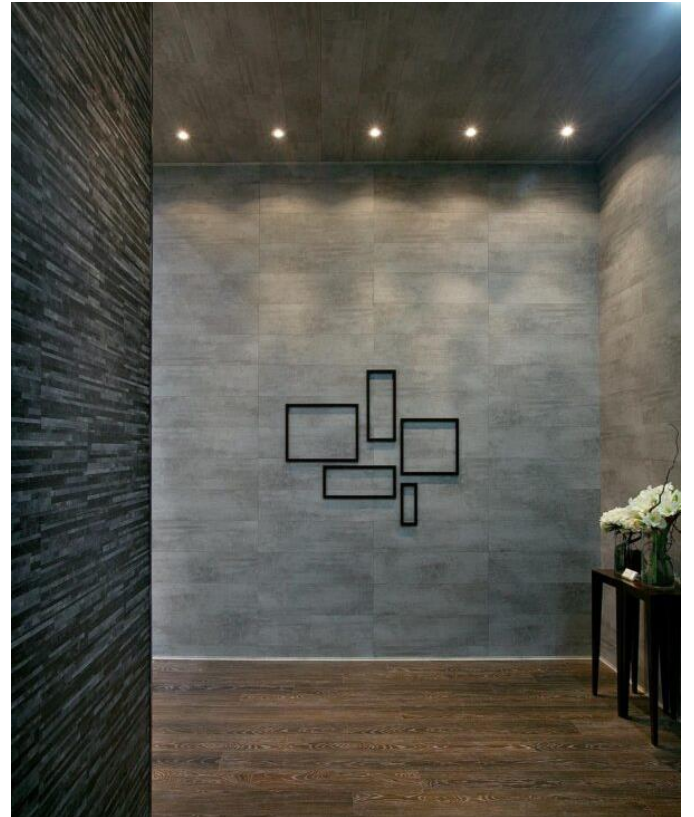
DESIGN WALL

Multi-functional mineral board

Installation examples and application images of Porstone boards



AenixZ Design wall



A close-up, vertical photograph of a door handle, likely made of brass or a similar polished metal. The handle is positioned on the left side of the frame, with its curved, cylindrical shape extending towards the center. The background is a blurred, light-colored wall, possibly the door itself, showing vertical lines and a soft gradient of light. The lighting is warm and directional, highlighting the texture and sheen of the metal.

Home Door

AenixZ

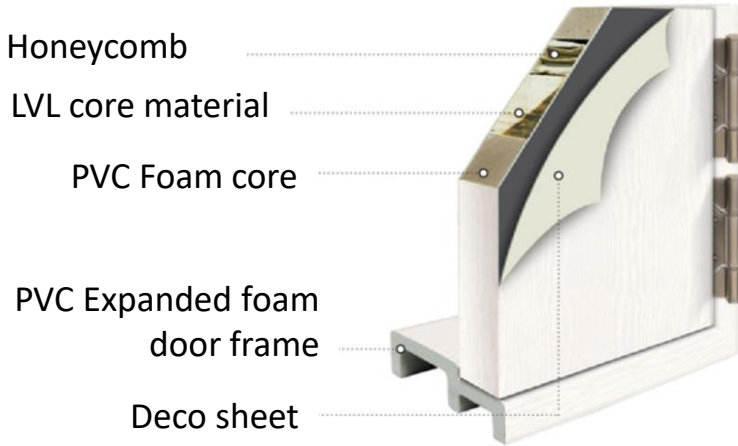
Fireproof door

The LPM (Low-Pressure Melamine) colors utilized for doors encompass a repertoire of over 500 diverse designs, providing consumers with a comprehensive array of colors, textures, patterns, and embossing options to suit their preferences. Notably, they exhibit outstanding antibacterial, pollution-resistant, and chemical-resistant properties, rendering them highly resilient against fire, water, and moisture, thus retaining their color integrity over prolonged periods of use

HOME DOOR

Fireproof Door

SPECIAL FEATURES



Non-combustible Board
 No toxic gas emissions upon combustion

Deco sheet

Deco sheet with a variety of colors and patterns applied

PVC Expanded foam door frame

PVC foam door frame, which is more effective when used with ABS doors

PVC Foam core

PVC foam core with enhanced waterproofing for edge finishing

LVL Core material

LVL (Laminated Veneer Lumber) core for preventing warping and twisting

Honeycomb

Excellent soundproofing and insulation properties due to honeycomb internal filling



HOME DOOR

Fireproof Door

RANGE OF USE





Toilet Door



HOME DOOR

Fireproof Door

SPECIAL FEATURES



N220



N241



N212



N205



N229



N246



N240



N227



N217



N207



N223



우드-N500



우드-N511



우드-N503



우드-N902

SPECIAL COLOR FEATURES



이븐



로젠



글리더



사각라인



와이



트리플라인



큐피트



아틀라스(세로)



아틀라스(가로)



아일랜드(A)



보르도



심플라인



스퀘어라인



모티브



큐티볼



피아노



민들레



은하수

HOME DOOR

Fireproof Door

Installation examples and application images of Homer Door



AenixZ Home Door



쪽양개 도어



미달이 도어



양개 도어

AenixZ

Environmentally friendly construction materials
for interior and exterior use,
designed to prevent fire spread

+ Vision of the Future

We are at the forefront of the market, pioneering a new paradigm with environmentally sustainable furniture and interior construction materials, characterized by both elegant aesthetics and practical functionality. Presenting a unique approach to space design, we aim to foster closer connections with our team members and all stakeholders, fostering genuine communication and cultivating strong bonds of trust and loyalty. Our commitment extends to prioritizing the production of safe materials, contributing to the enhancement of societal safety standards.